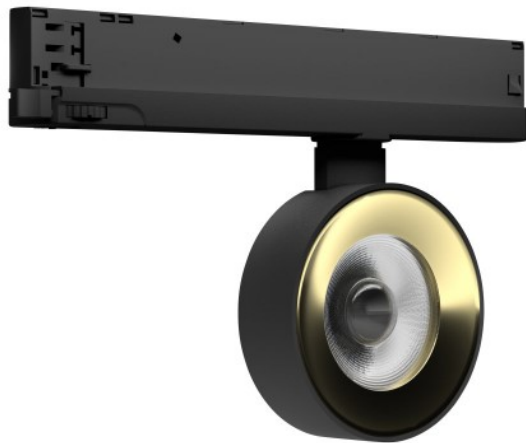


PRODUCT DATASHEET

TR SP COMPACT D100 28 W 930 NFL BK

TRACKLIGHT SPOT COMPACT | Shaped 3-phase tracklight spot with in-track control gear



AREAS OF APPLICATION

- Direct replacement for luminaires using HID lamps
- Accent lighting
- Fashion shops, accessories shops
- Retail
- Hotels, restaurants, shops

PRODUCT BENEFITS

- Timeless design suitable for high-quality interior
- Included 3-phase adapter compatible with common tracks (NORLUX, GLOBAL, NUCO, NORDIC)
- No distraction of attention from the illuminated objects thanks to reduced design
- Low flicker light thanks to special electronic control gear
- 5 years guarantee

PRODUCT FEATURES

- Compact tracklight spot with in-track control gear
- Made in Germany
- Luminaire efficacy: up to 85 lm/W
- Rotation angle: 350°, tilt angle: 90°
- Very good color rendering index Ra: 90
- Color rendering index R_a : > 60
- Initial color consistency: ≤ 3 SDCM



- Available with beam angle: 25°, 36°
- Follows the unified LEDVANCE design language (SCALE design)
- Robust die-cast aluminum housing
- Available in matt white (like RAL9010), matt black (like RAL9005) and concrete grey (like RAL7042)

TECHNICAL DATA

Electrical data

Nominal wattage	28.00 W
Operating mode	Integrated LED driver
Nominal voltage	220...240 V
Mains frequency	50/60 Hz
Power factor λ	> 0.90
Max. no. of lum. on circuit break. B16 A	25
Max. no. of lum. on circuit break. C16 A	40
Inrush current	< 20 A
Total harmonic distortion	< 20 %
Inrush current time T_{h50}	<500 μ s

Luminaire control gear data

ECG - Output voltage	27...42 V
Low flicker	Yes
ECG - Output ripple current	<3 %

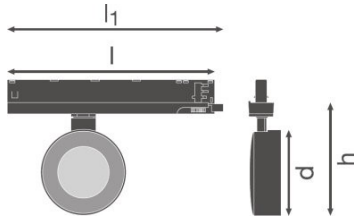
Photometrical data

Color temperature	3000 K
Color rendering index Ra	90
Light color (designation)	Warm White
Luminous flux	2280 lm
Luminous efficacy	80 lm/W
Standard deviation of color matching	\leq 3 sdc _m

Light technical data

Beam angle	25.00 °
------------	---------

Dimensions & weight



Length	260.0 mm
Width	33.0 mm
Height	160.0 mm
Product weight	400.00 g

Colors & materials

Product color	Black
Housing color	Black
Body material	Aluminum
Cover material	Polymethylmethacrylate (PMMA)

Temperatures & operating conditions

Ambient temperature range	-20...+35 °C
----------------------------------	--------------

Lifespan

Number of switching cycles	100000
Lifespan L70/B50 at 25 °C	80000 h
Lifespan L80/B10 at 25 °C	50000 h
Lifespan L90/B10 at 25 °C	35000 h

Additional product data

Mounting type	Surface
Mounting location	Mounting track
Low flicker	Yes

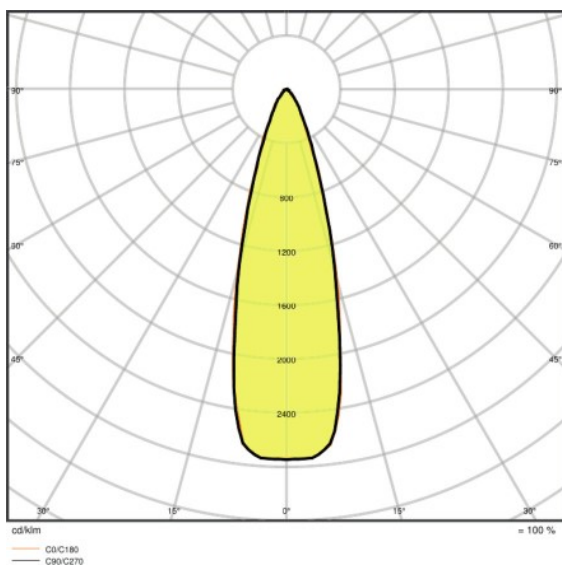
Capabilities

Dimmable	No
Type of connection	Adapter, 3-phase
LED module replaceable	Not replaceable

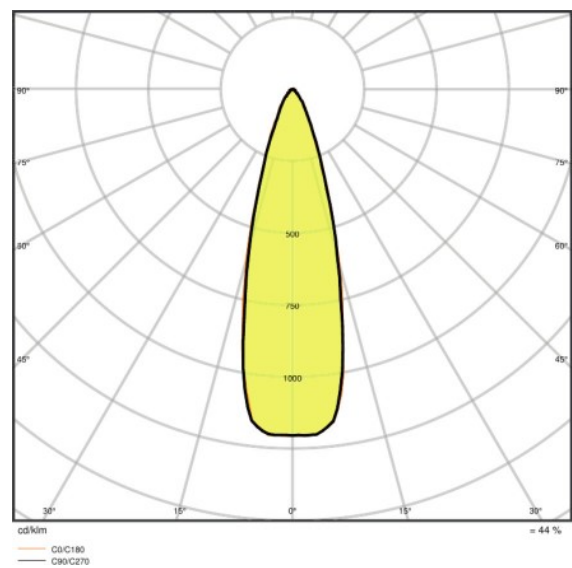
Certificates & standards

Type of protection	IP20
Protection class	II
Protection class IK (shock resistance)	IK03
Glow Wire Test according to IEC 60695-2-12	650 °C
Photobiological safety group EN62778	RG 1
Standards	CE/CB/ENEC/TÜV SÜD/EAC/RoHS

Light Distribution



LDC typ polar



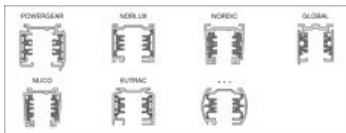
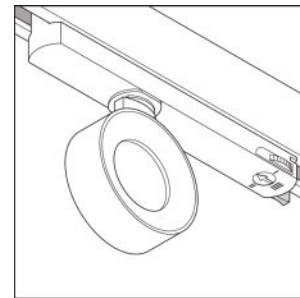
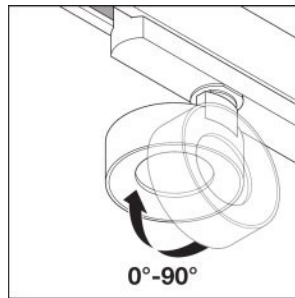
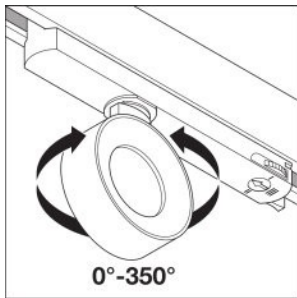
LDC typ polar

LOGISTICAL DATA

Product code	Packaging unit (Pieces/Unit)	Dimensions (length x width x height)	Gross weight	Volume
4058075335929	Folding carton box 1	114 mm x 114 mm x 264 mm	513.00 g	3.43 dm ³
4058075335936	Shipping carton box 4	239 mm x 239 mm x 280 mm	2292.00 g	15.99 dm ³

The mentioned product code describes the smallest quantity unit which can be ordered. One shipping unit can contain one or more single products. When placing an order, for the quantity please enter single or multiples of a shipping unit.

ADDITIONAL CATALOG INFORMATION



REFERENCES / LINKS

For Guarantee see

▶ www.ledvance.com/guarantee

DISCLAIMER

Subject to change without notice. Errors and omission excepted. Always make sure to use the most recent release.